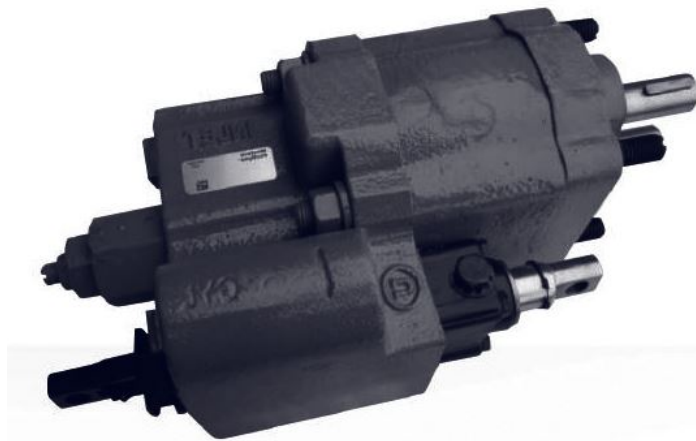
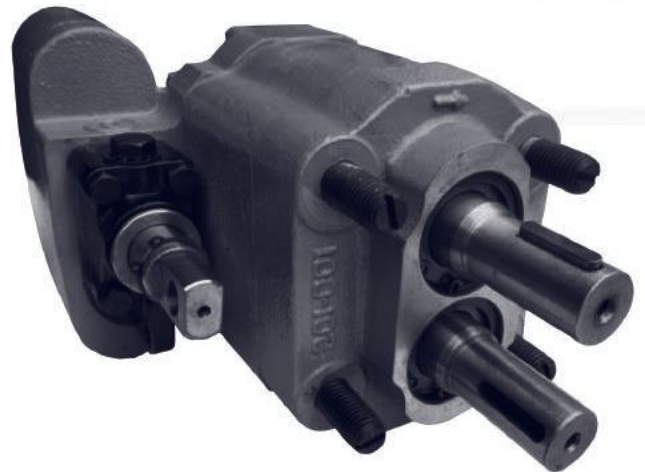
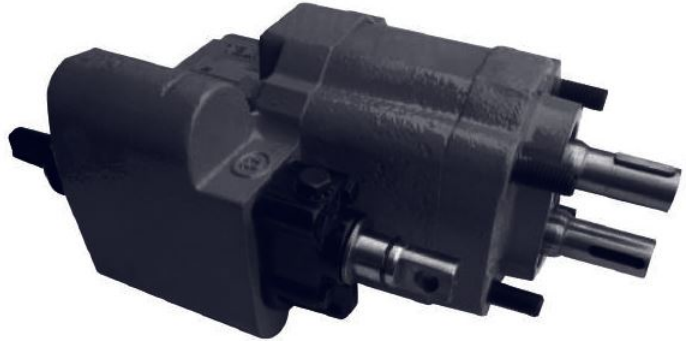


**DPC101/C102 CAST IRON  
PUMP/VALVE COMBINATION**

- Rugged Cast Iron Construction
- Interchangeable Parts Optional
- Mountings / Actuators High
- Performance / Low Cost Fully
- Tested



# DUMP PUMP/VALVE ORDERING SPECIFICATION

Technical Union offers a complete line of rugged cast iron pump /valve combination for the dump truck and trailer industry. Units are available for SAE-B PTO mounting (C102) or remote drive shaft mounting (C101). Units are supplied with full flow adjustable main relief valves to protect the pump and cylinder from overloading and shock loads. A three position valve assembly controls the raising, holding and lowering of a single acting cylinder, control valve can be cab operated using mechanical cable actuation or air shift control. Installation can be either two line or three line type using the sleeve supplied.

### MODEL CODE BREAKDOWN

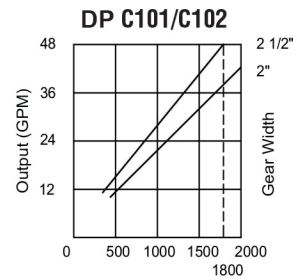
**DP - C102 - 25 - R - M - 2**

- DP** - DP Manufactured
- C102** - C101 Drive shaft mount (Remote)  
C102 PTO Direct Mount
- 25** - Gear In3/  
Width rev  
20 - 2.0" 5.1  
25 - 2.5" 6.4
- R** - R - CW Rotation  
L - CCW Rotation  
(102- design only)
- M** - M - Manual actuated  
A - Air actuation
- 2** - 2 - 2 Line installation  
3 - 3 Line installation

### TECHNICAL DATA

Model series	Maximum psi	GPM @1800 RPM		MAXIMUM SPEED
		2"	2.5"	
C101	2500 *	39	48	2400
C102	2500 *	39	48	2400

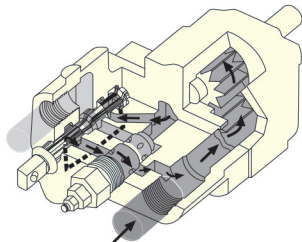
\*Factory default setting



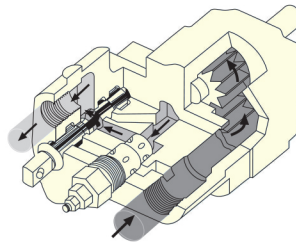
## 2-LINE/3-LINE INSTALLATION

### 2-line installation

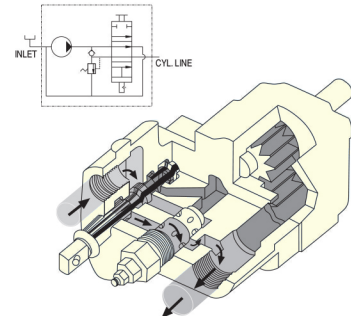
One line to cylinder, one line to the reservoir. For intermittent operation only.



**Spool in Neutral:**  
Oil recirculates internally.



**Raise Position:**  
Oil is routed through work port to raise the cylinder.



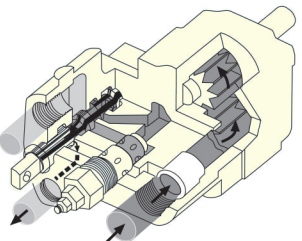
**Lower Position:**  
Oil flows from the cylinder through the relief valve to return to tank.

### C101/C102: 2-line Installation

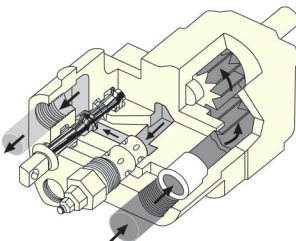
For intermittent operation.

### 3-line installation

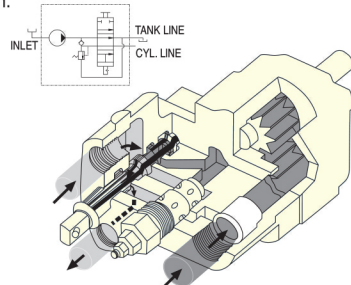
One line to cylinder, two lines to the reservoir. For continuous or intermittent operation.



**Spool in Neutral:**  
Oil circulates through the pump and returns to tank.



**Raise Position:**  
Oil is routed through work port to raise the cylinder.



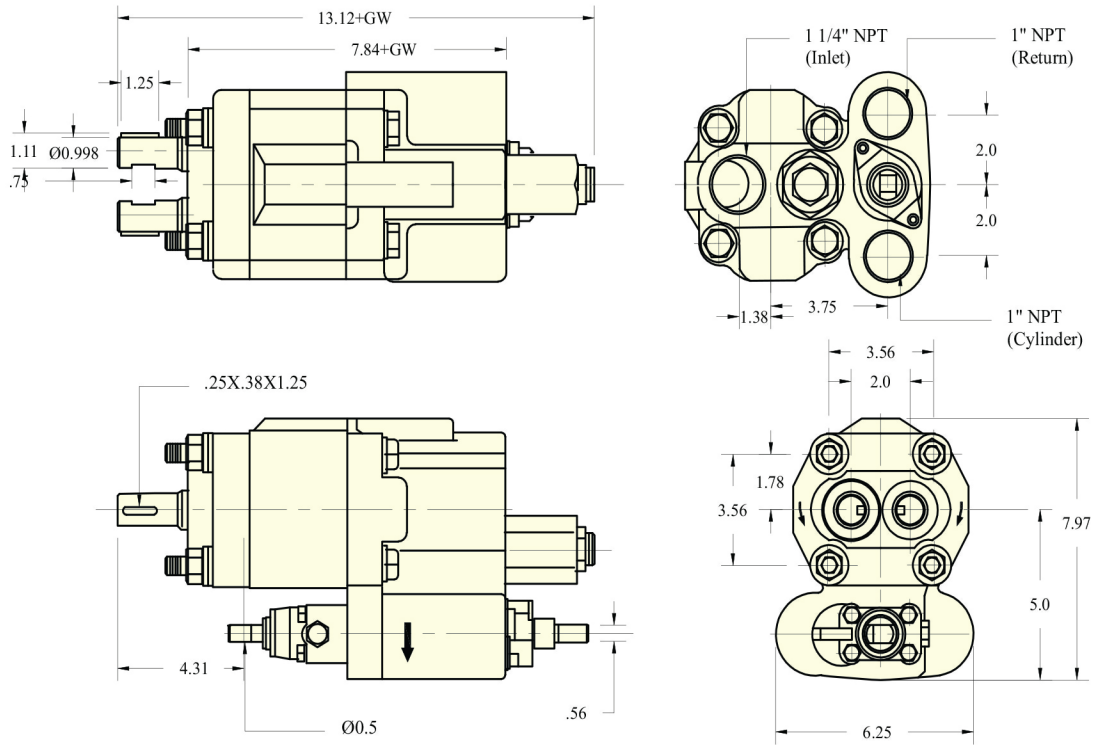
**Lower Position:**  
Oil flows from the cylinder, through the bottom port and returns to tank<sub>2</sub>

### C101/C102: 3-line Installation

For continuous or intermittent operation.

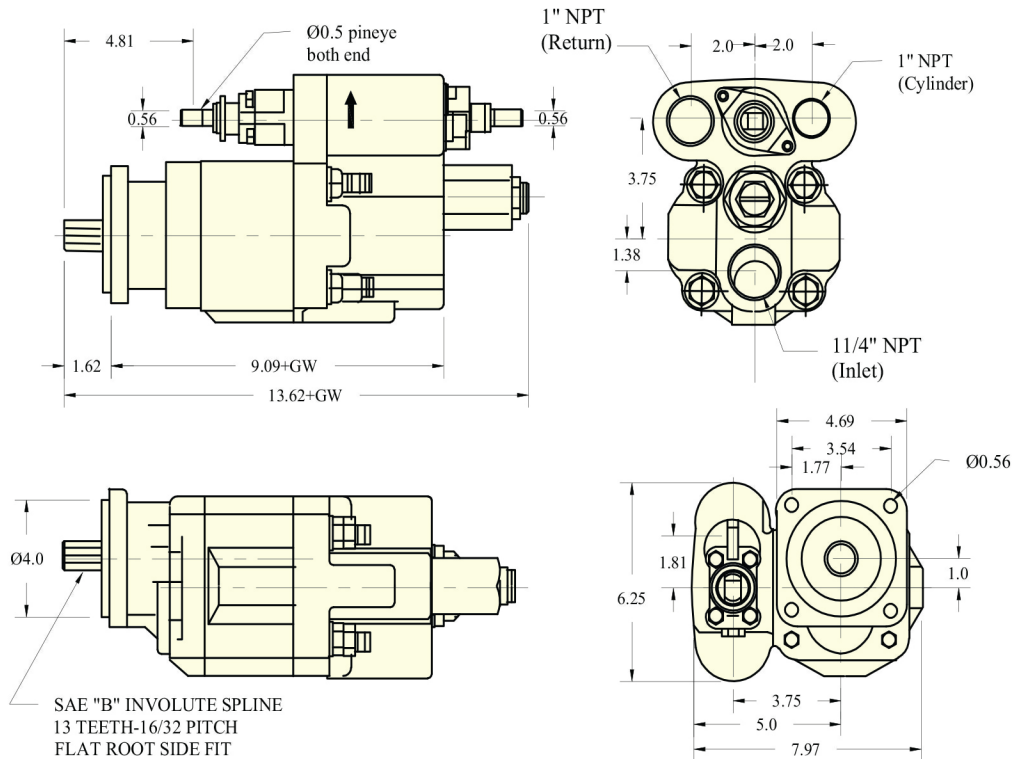
## DP C101 CAST IRON PUMP/VALVE DIMENSIONS

**WF C101**  
 GEAR WIDTH:  
 2.0" 2.5"  
 WEIGHT(lbs):  
 66 69

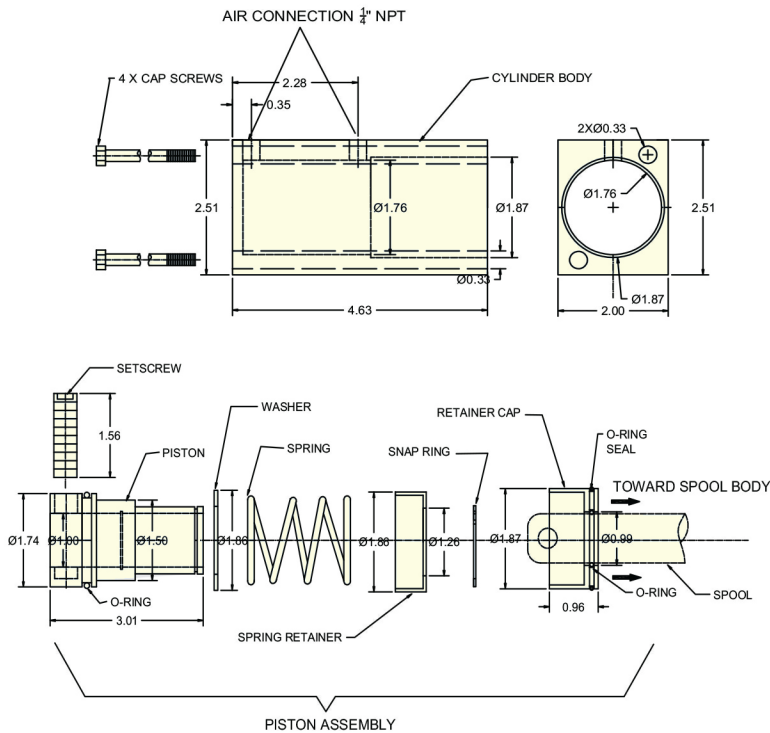


## DP C102 CAST IRON PUMP/VALVE DIMENSIONS

**DP C102**  
 GEAR WIDTH:  
 2.0" 2.5"  
 WEIGHT(lbs):  
 68 71



## DP C101/C102 AIR SHIFT



### Air Shift Installation Instructions

- The air shift mounts on DPC101/C102 dump pump in place of the detent end cap
- Prepare work area by assuring a clean work environment for assembly & disassembly of the dump pump spool valve

### Preparing Pump/Valve spool for air shift kit installation

- Remove snap ring and washer from valve spool
- Remove the detent cap, spring and ball from the valves end cap
- Remove four(4) cap screws and slide detent cap from the spool
- **\*\*DO NOT REMOVE "O" RING FROM VALVE HOUSING\*\***

### Installation of Air Shift Kit

- Remove retainer cap
- Remove snap ring / spring retainer / spring / washer
- Slide piston assembly from the cylinder body
- Remove setscrew from piston assembly using 1/4" hex wrench
- Grease and slide retainer cap over valve spool with flat face of cap facing the spool body
- Assemble snap ring / spring retainer / spring / washer on piston
- Slide piston over valve spool and align and insert set screw attaching the piston to the spool
- Grease piston and O rings
- Slide cylinder body over the piston assembly making sure not to damage the O rings
- Secure the assembly using the 4 cap screws supplied

## Supporting the Channels

**Supporting the channels** means shipping our high quality products to the distributors and repair shops which provide local knowledge and assistance to the users and builders of fluid power equipment.